



Illawarra Amateur Radio Society



**Mid South Coast
Amateur Radio
Club Inc**

PO Box 437 Nowra NSW 2541
email mscarinc@gmail.com

www.mscar.org.au

COMBINED CLUBS FIELD DAY AND BARBECUE LUNCH WWFF NATIONAL PARKS ACTIVATIONS SATURDAY 28 SEPTEMBER 2019

The Illawarra Amateur Radio Society and the Mid South Coast Amateur Clubs will be joining together to hold a field day

The main activity will be activations of National Parks in the WWFF program. The main modes of activation will be using 2 metre and 70cm rather than the usual HF frequencies. This will be possible because of the number of National Parks in close proximity in our area. These frequencies will also provide the opportunity for those who cannot get out to the field day to make contact with those operating portable in the National Parks

There will be portable stations operating in at least three National Parks

Number	Name of Park	Location in Park	Operator
WWFF-0249	Jervis Bay NP	Hammer Head Point	David, VK2LDW
WWFF-1329	Illawarra Escarpment SCA	Mt Kembla Lookout	Rob, VK2XIC
WWFF-0447	Seven Mile Beach NP	Gerroa	John, VK2NJP (VK2HQ)

Operating Frequencies

2 metre	146.5, 146.525, 146.550 FM
70 cm	439.000, 439.525, 439.550 FM

Schedule

09:00 – 11:00	Activation of National Parks on VHF/UHF frequencies
11:00 – 12:00hrs	Travel to Gerroa picnic Area
12:00 onwards	Barbecue lunch and gathering.

Food and drinks will be provided by the clubs. Bring your own chair.

RSVP

If you wish to activate some other parks please do so but let your Club Secretary know of your plans

If you have any questions please contact your Club Secretary

Otherwise just let us know you are coming so we have numbers to cater for the barbecue

Mid South Coast Amateur Radio Club
David, VK2LDW
Phone 0419 993 179
Email mscarinc@gmail.com

Illawarra Amateur Radio Society
Keith, VK2KQB
Phone 0400 511 535
Email iars.keith@gmail.com

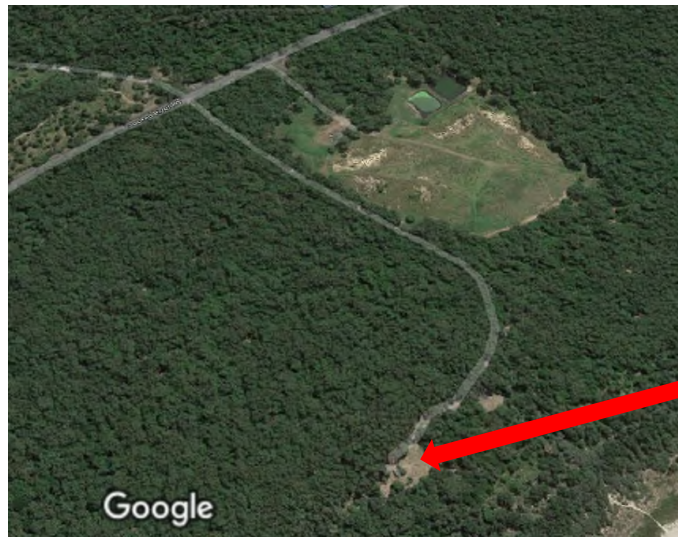
SEE OVER MAPS

MAPS FOR COMBINED CLUBS FIELD DAY SATURDAY 28 SEPTEMBER 2019

Gerroa Picnic Area, Seven Mile Beach NP WWFF-0447

Main operating site and location of barbecue

Entrance is approximately 1.4 km south of the Crooked River Bridge on the Gerroa Road



OPERATING SITE
BARBECUE

Mt Kembla Lookout, Illawarra Escarpment SCA WWFF-1329

Located approximately 3 km from Mt Kembla village along the Cordeaux Rd



OPERATING SITE
GRASSED VIEWING AREA

Hammer Head Point Picnic Area Jervis Bay NP WWFF-0249

Entrance is about 3.5 km from Currarong on the Currarong Rd



OPERATING SITE
VIEWING PLATFORM

OPERATING SITE
PICNIC AREA